

# ACCWP Stormwater Resource Plan

Sandy Mathews,  
ACCWP Program Manager



MEMBER AGENCIES:

Alameda  
Albany  
Berkeley  
Dublin  
Emeryville  
Fremont  
Hayward  
Livermore  
Newark  
Oakland  
Piedmont  
Pleasanton  
San Leandro  
Union City  
County of Alameda  
Alameda County Flood  
Control and Water  
Conservation District  
Zone 7 Water Agency

## ALAMEDA COUNTYWIDE CLEAN WATER PROGRAM STORM WATER RESOURCE PLAN

January 2019  
Revised October 2020

# What is a Storm Water Resource Plan?

---

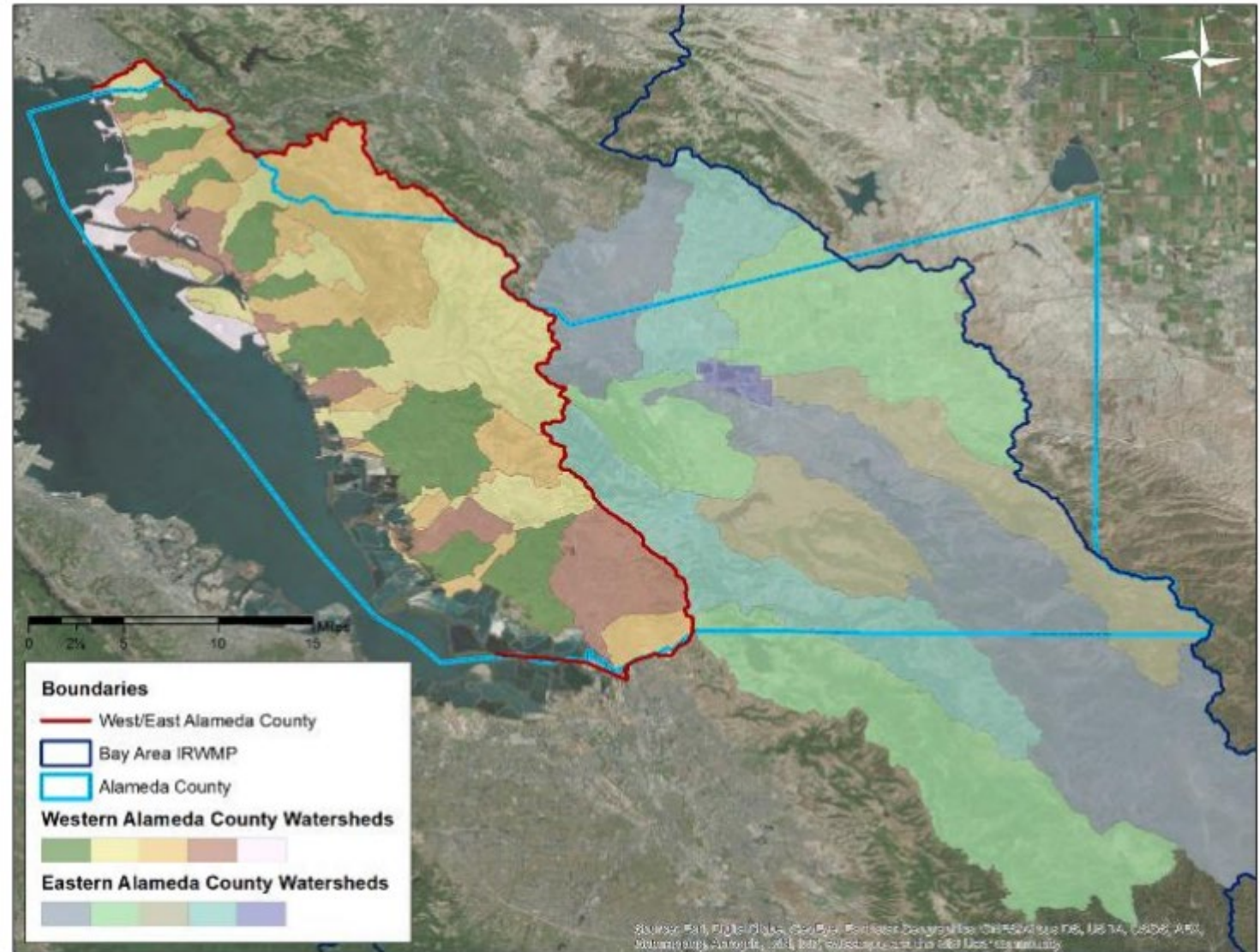
- Water Code sections 10560 et seq. (as amended by Senate Bill 985)
  - Requires a Storm Water Resource Plan as a condition of receiving funds for storm water and dry weather runoff capture projects from any bond approved by voters after January 2014
- A planning document that identifies potential opportunities, projects, and programs that provide multiple benefits, including water quality, water supply, community enhancement, and other benefits
- A process for evaluating potential opportunities and their multiple benefits

## SWRP covers all of Alameda County



# SWRP Overview

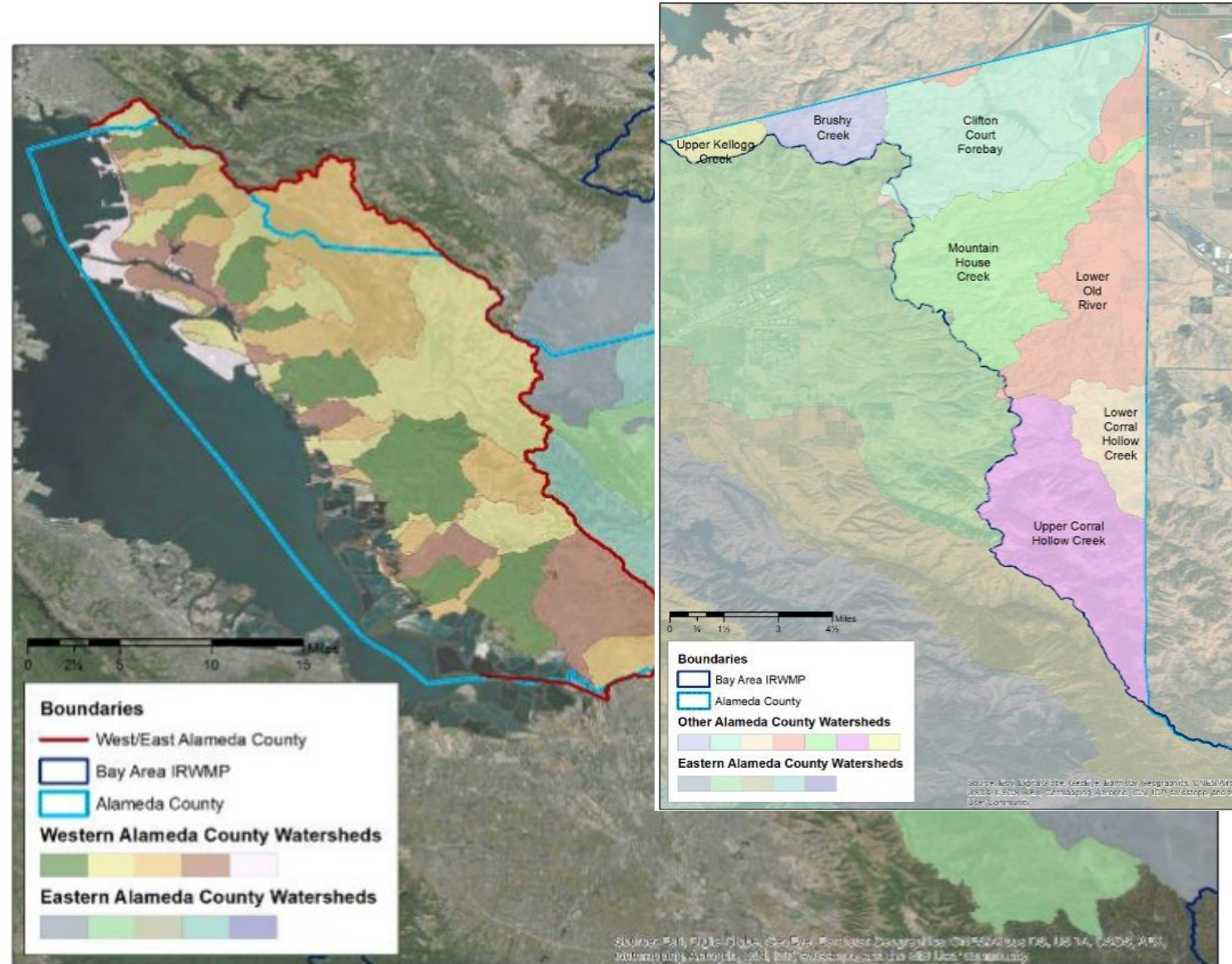
- Characterizes watersheds
- Identifies water quality concerns and regulatory requirements
- Creates process to identify and score multi-benefits for potential project opportunities
- Describes the outreach, and public participation process
- Describes the implementation strategy



Overview of Major Watersheds and Subwatersheds in Alameda County

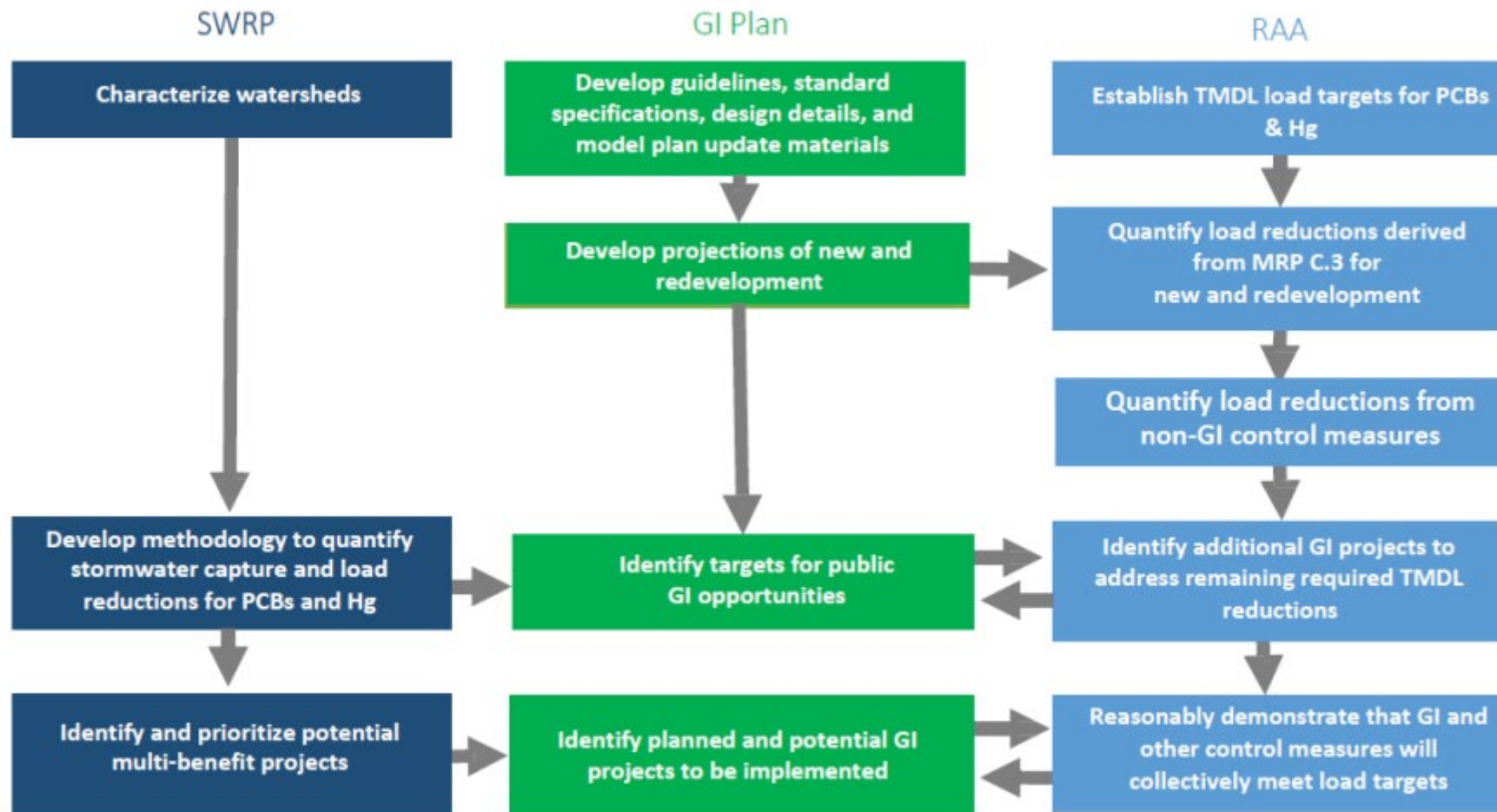
# SWRP Overview

- Characterizes watersheds
- Identifies water quality concerns and regulatory requirements
- Creates process to identify and score multi-benefits for potential project opportunities
- Education, Outreach, and Public Participation
- Implementation Strategy



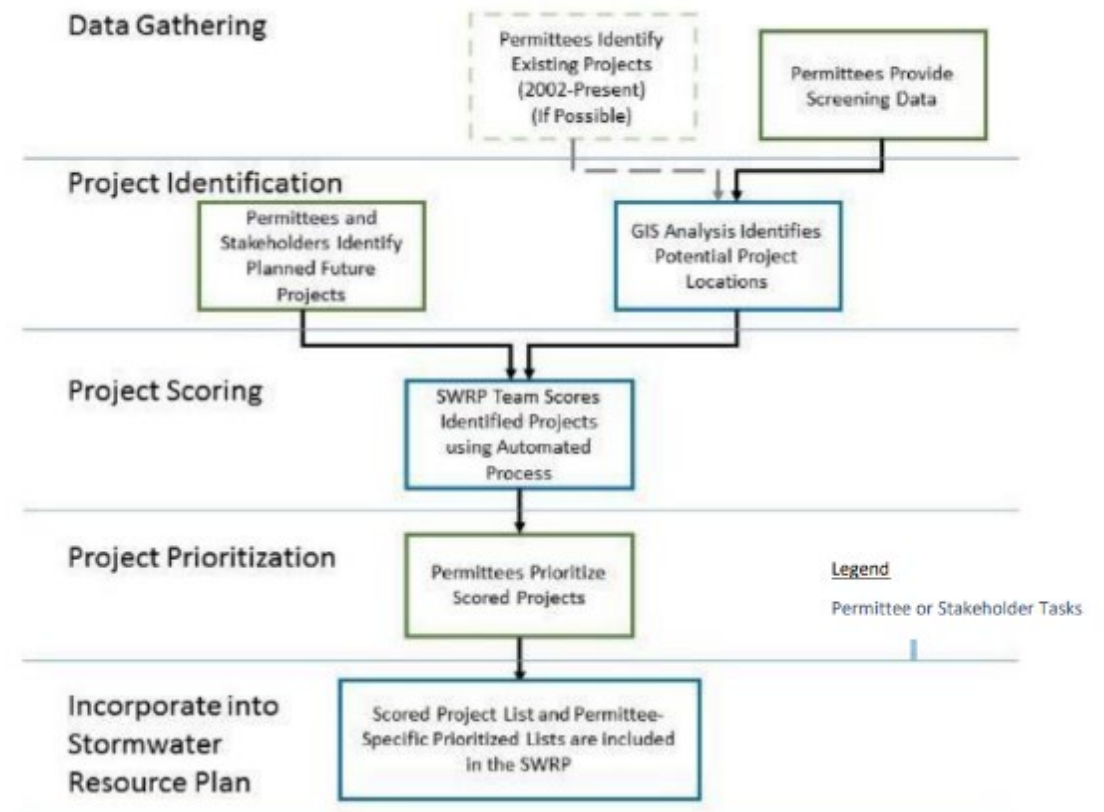
Overview of Major Watersheds and Subwatersheds in Alameda County

# Relationship of the SWRP to Other Plans



# Identification of Project Opportunities

- Identify projects
    - ACCWP members
    - SWRP stakeholders
    - GIS desktop analysis
  - Score projects
    - Automated process using metrics
  - Rank projects
    - Automated ranking based on metrics
- AND
- Institutional knowledge screening



# Project Metrics-Based Benefits Scoring

Project Component	Benefit Addressed	Points		
		0	1	2
Parcel Area (For Regional and Parcel-Based Projects Only)	All	< 1 acre	1 - < 4 acres	> 4 acres
Location Slope	All	7-10%	3-7%	0-3%
Infiltration Feasibility	All	No	Partial <sup>1</sup>	Yes
PCBs/Mercury Yield Classification in Project Drainage Area <sup>2</sup>	Water Quality	New Urban, Agriculture/ Open Space, or Other <sup>2</sup>	Old Urban <sup>2</sup>	Old Industrial or Source Property <sup>2</sup> (+1)
Regional Facility (For Regional and Parcel-Based Projects Only)	Water Quality	--	Yes	--
Removes Pollutant Loads from Stormwater	Water Quality	Trash Capture Devices	Non-Green Infrastructure and Non-Infiltrating Green Infrastructure Treatment Control <sup>3</sup>	Partially <sup>4</sup> and Fully Infiltrating Green Infrastructure Project
Augments Water Supply	Water Supply	--	Infiltrating Green Infrastructure or Infiltrating Flood Control Project over Potential Water Supply Aquifer	Harvest/Use or Other Water Augmentation Project <sup>5</sup>

Project Component	Benefit Addressed	Points		
		0	1	2
Provides Flood Control Benefits	Flood	--	Fully and Partially <sup>4</sup> Infiltrating Green Infrastructure Project	Flood Control Project <sup>5</sup>
Re-establishes natural water drainage systems	Environmental	--	Fully and Partially <sup>4</sup> Infiltrating Green Infrastructure Project	Stream Restoration or Hydromodification Control <sup>5</sup>
Develops, restores, or enhances habitat and open space	Environmental	--	Green Infrastructure Project	Habitat Restoration Project <sup>5</sup>
Provides enhanced or created recreational and public use areas with potential opportunities for community involvement and education	Community	--	Green Infrastructure Project	Public Use Area or Public Education Project Component <sup>6</sup>
Trash Capture Co-Benefit	Water Quality	Low TMA	Medium TMA	High or Very High TMA

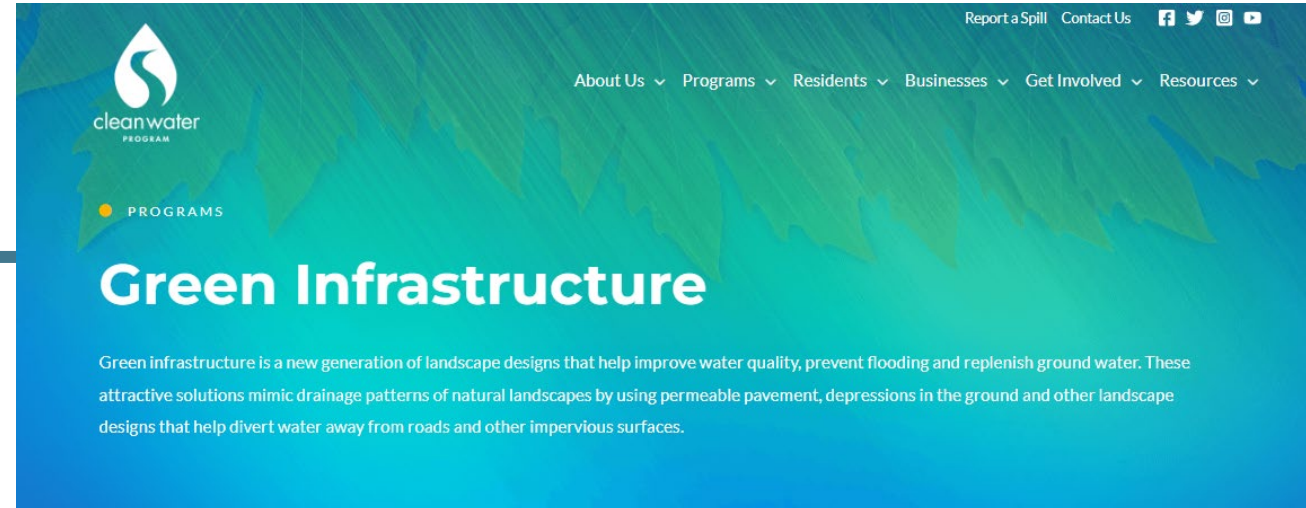
# Database of Prioritized Project Opportunities

Jurisdiction	Potential Project Opportunities	Jurisdiction	Potential Project Opportunities
Albany	434	Hayward	5677
Alameda	4411	Livermore	7044
ACFCD	376	Newark	1978
County	5492	Oakland	11260
Berkeley	3192	Piedmont	232
Dublin	3038	Pleasanton	5464
Emeryville	483	San Leandro	3104
Fremont	11852	Union City	3663

Notes:  
Other Stakeholders: East Bay Regional Park District: 5  
Zone 7 opportunities included in jurisdictions  
Project Opportunities are potential projects, and do not represent planned or funded projects.

# SWRP Posted to ACCWP Website

- <https://cleanwaterprogram.org/programs/green-infrastructure/>
- Includes link to form to add projects to the database
  - Submit new projects to [info@cleanwater.org](mailto:info@cleanwater.org)
- Stormwater capture projects receiving state grant funds need to be including in SWRP



Green infrastructure is a new generation of landscape designs that help improve water quality, prevent flooding and replenish ground water. These attractive solutions mimic drainage patterns of natural landscapes by using permeable pavement, depressions in the ground and other landscape designs that help divert water away from roads and other impervious surfaces. As a result, more rainwater is absorbed into and filtered by the soil, and less ends up as runoff that washes pollutants off streets and carries them through the storm drain system into creeks, wetlands and the Bay. Scroll down to learn more about typical green infrastructure features.

## Stormwater Resource Plan (SWRP)

Throughout Alameda County, many green infrastructure projects have been put in place in recent years, and the list is growing. In order to receive state funding for new projects, the Clean Water Program has to develop a Stormwater Resource Plan (SWRP) that identifies potentially eligible green infrastructure projects in the county's 17 jurisdictions.

[Final SWRP incl. Appendices 1-4](#) - View or download (2.6MB)

[Final SWRP Appendix 5: Prioritized Projects](#) - View or download (22.6MB)

To submit a project for inclusion in the SWRP, please follow the instructions in Appendix 2 and submit a completed [form](#) to [info@cleanwaterprogram.org](mailto:info@cleanwaterprogram.org).

# SWRP Concurrence

- State Water Board issued concurrence for SWRP
- Submitted to BAIRWM for incorporation into the IRWMP



## State Water Resources Control Board

May 12, 2025

Sandy Mathews, Program Manager  
Alameda Countywide Clean Water Program  
Larry Walker Associates  
2246 Sixth Street  
Berkeley, CA 94710

### **SUBJECT: Storm Water Resource Plan Concurrence Letter**

Dear Ms. Mathews,

Thank you for submitting the Alameda Countywide Clean Water Program Storm Water Resource Plan (SWRP) and the completed Self-Certification Checklist (Checklist) dated October 2020 to the State Water Resources Control Board (State Water Board) Division of Financial Assistance (Division).

State Water Board staff completed a review of the Checklist and referenced pages provided with the SWRP. State Water Board staff concur that the SWRP and Checklist are consistent with the California Water Code sections 10561-10573. By this concurrence, all eligible entities with storm water and dry weather runoff capture projects included in the SWRP are eligible to receive funding from a bond act approved by voters after January 1, 2014.

State Water Board staff's review was for funding eligibility related to a bond act only. The review of the submitted SWRP and Checklist does not include a technical evaluation or analysis of the SWRP or any supporting documents, and this letter provides no approval of these documents.

The State Water Board encourages the Alameda Countywide Clean Water Program to submit future revisions of the SWRP to the Division. Please note that the revised SWRPs must be submitted to the Integrated Regional Water Management Program prior to submission to the Division.

Please do not hesitate to contact Rachid Ait-Lasri at [Rachid.Ait-Lasri@waterboards.ca.gov](mailto:Rachid.Ait-Lasri@waterboards.ca.gov) or (916) 323-3435 should you have any additional questions.

Sincerely,

A handwritten signature in black ink, appearing to read "M. Downey".

Michael Downey, Assistant Deputy Director  
Division of Financial Assistance

E. JOAQUIN ESQUIVEL, CHAIR | ERIC OPPENHEIMER, EXECUTIVE DIRECTOR

1001 I Street, Sacramento, CA 95814 | Mailing Address: P.O. Box 100, Sacramento, CA 95812-0100 | [www.waterboards.ca.gov](http://www.waterboards.ca.gov)

# Questions

**Sandy Mathews**  
**Stormwater Program Manager**  
**Alameda Countywide Clean Water Program**  
**[Sandym@lwa.com](mailto:Sandym@lwa.com)**