

Napa River Watershed Stormwater Resource Plan

Elizabeth Yin, LWA

Jeff Skinner, NCSPPP

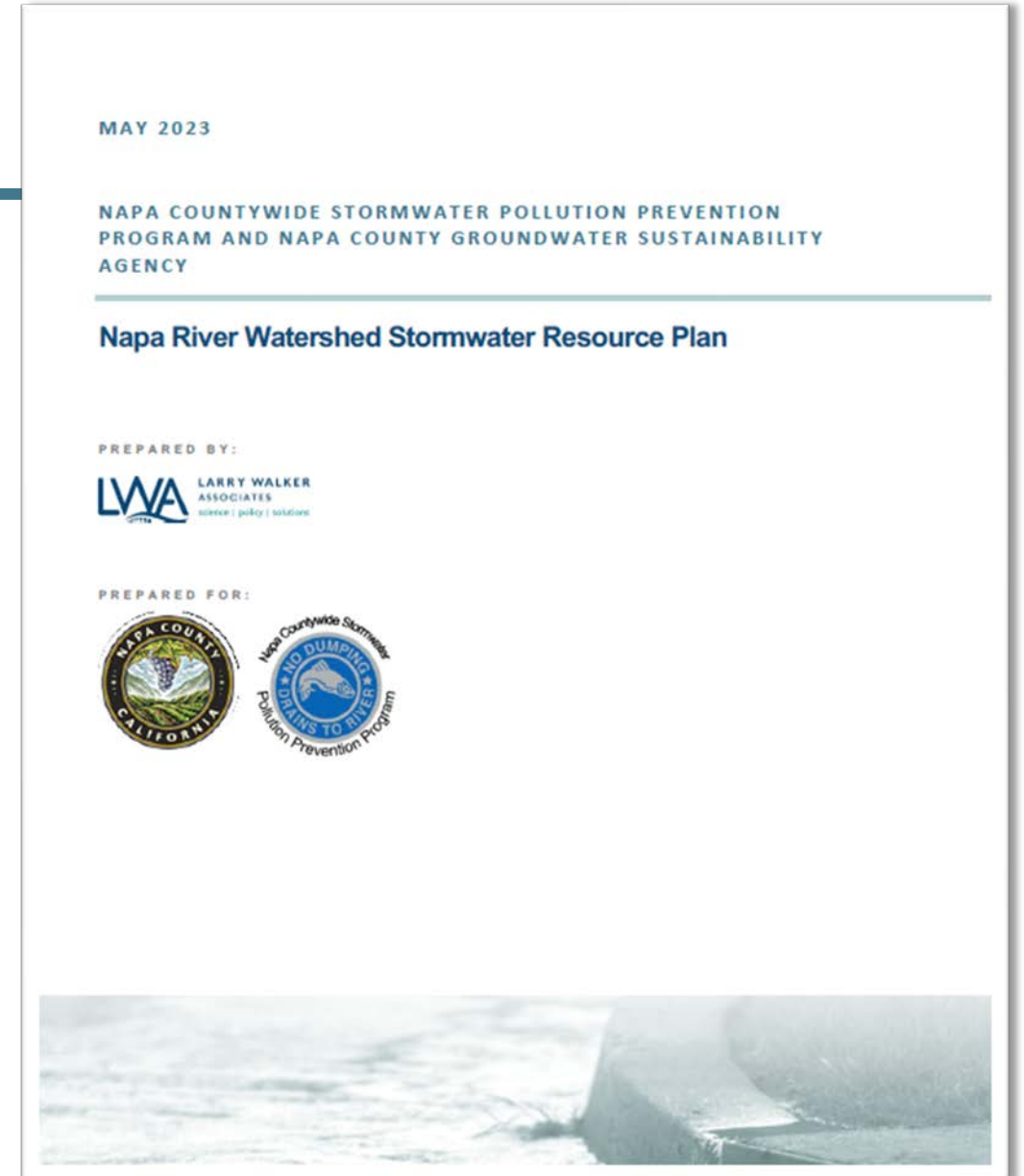
December 2, 2024

What is a Storm Water Resource Plan?

- Water Code sections 10560 et seq. (as amended by Senate Bill 985, Stats. 2014, ch. 555, § 5).1 Water Code section 10563, subdivision (c)(1), requires a Storm Water Resource Plan (Plan) as a condition of receiving funds for storm water and dry weather runoff capture projects from any bond approved by voters after January 2014.
- A planning document that identifies potential opportunities, projects, and programs that provide multiple benefits, including water quality, water supply, community enhancement, and other benefits.
- A process for evaluating potential opportunities and their multiple benefits.

SWRP Overview

- Watershed Characterization
- Water Quality Concerns and Regulatory Requirements
- Process for the Identification, qualification, and scoring of multiple benefits of potential project opportunities
- Education, Outreach, and Public Participation
- Implementation Strategy



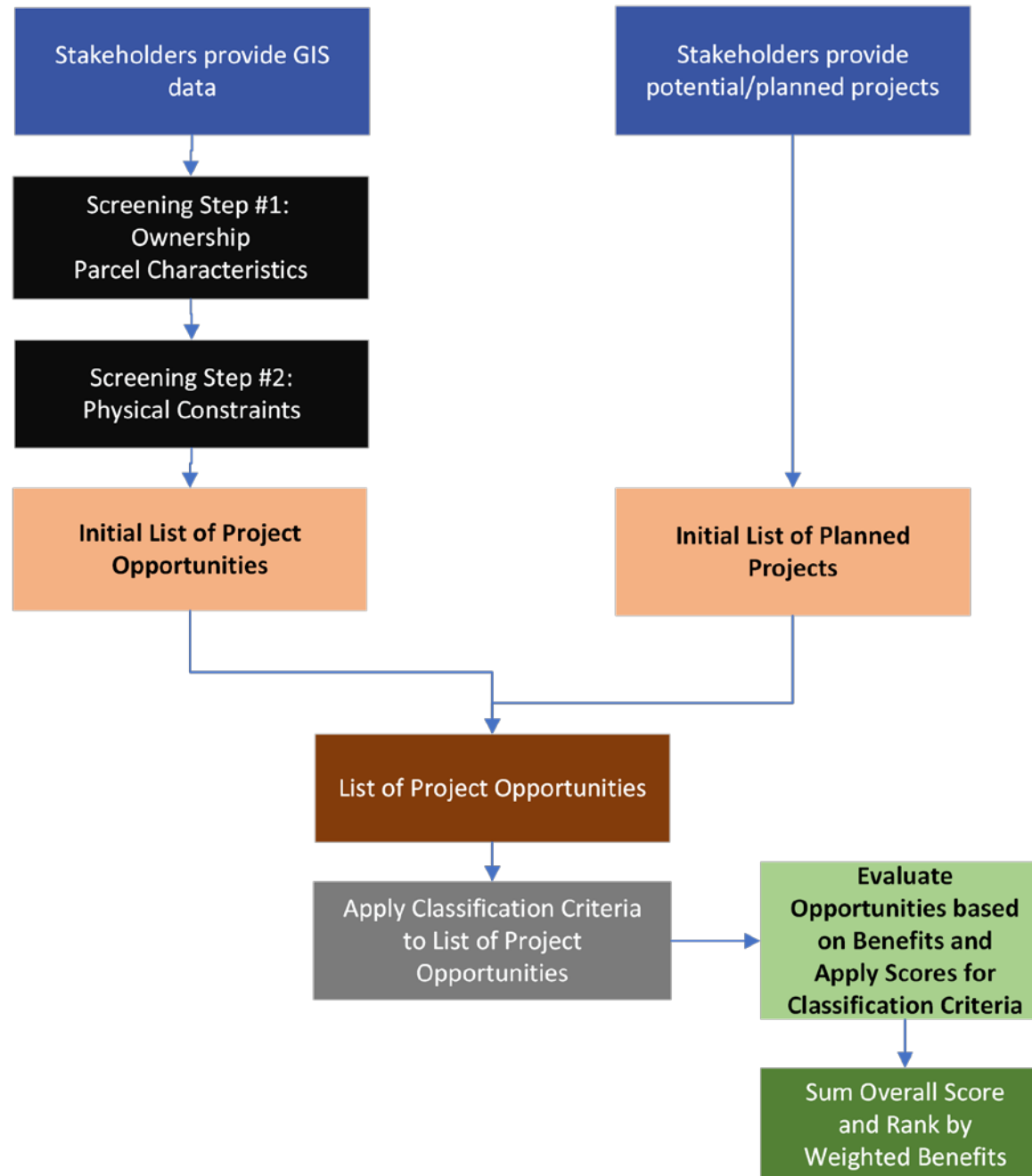
Development Process



Opportunity Screening

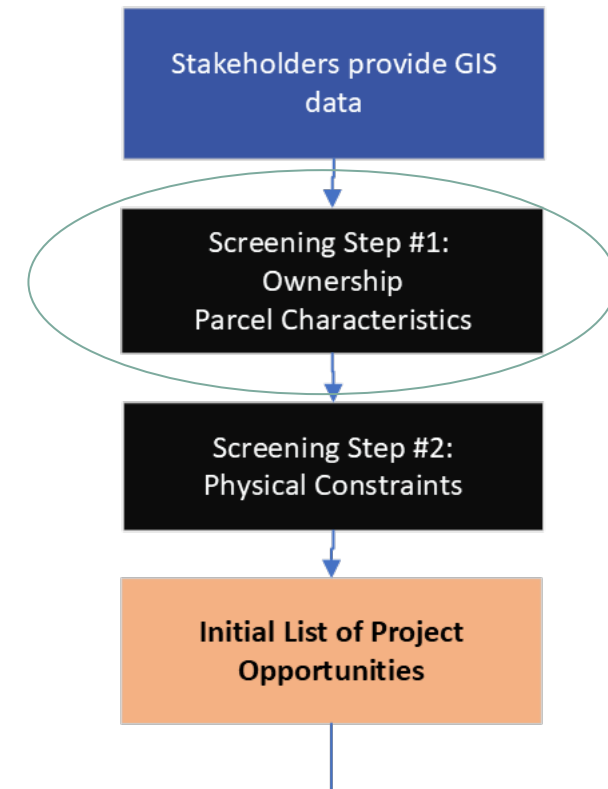
Process Overview

- Data Gathering
- Screening
- Scoring



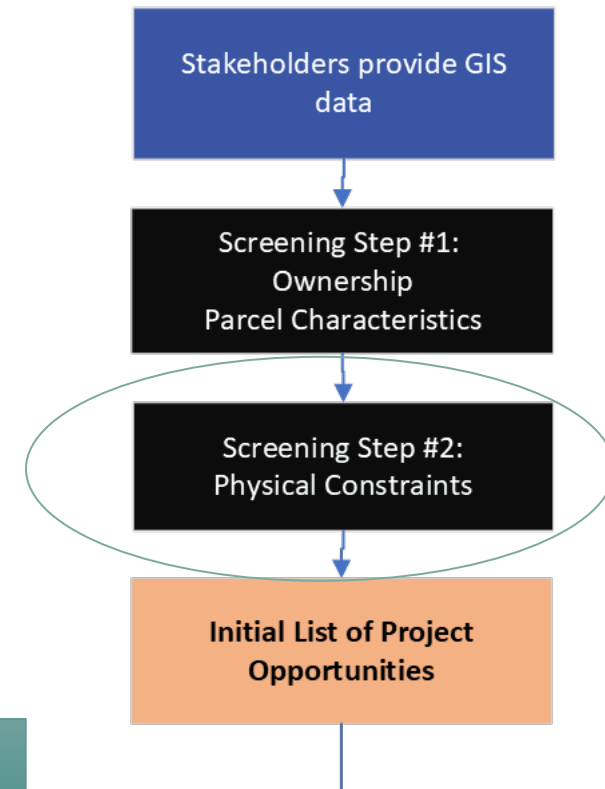
Screening Criteria: General Attributes

- Screening step to remove parcels ineligible for funding
- Ownership Criteria
- Parcel Characteristics
- ROW Criteria



Screening Criteria: Physical Constraints

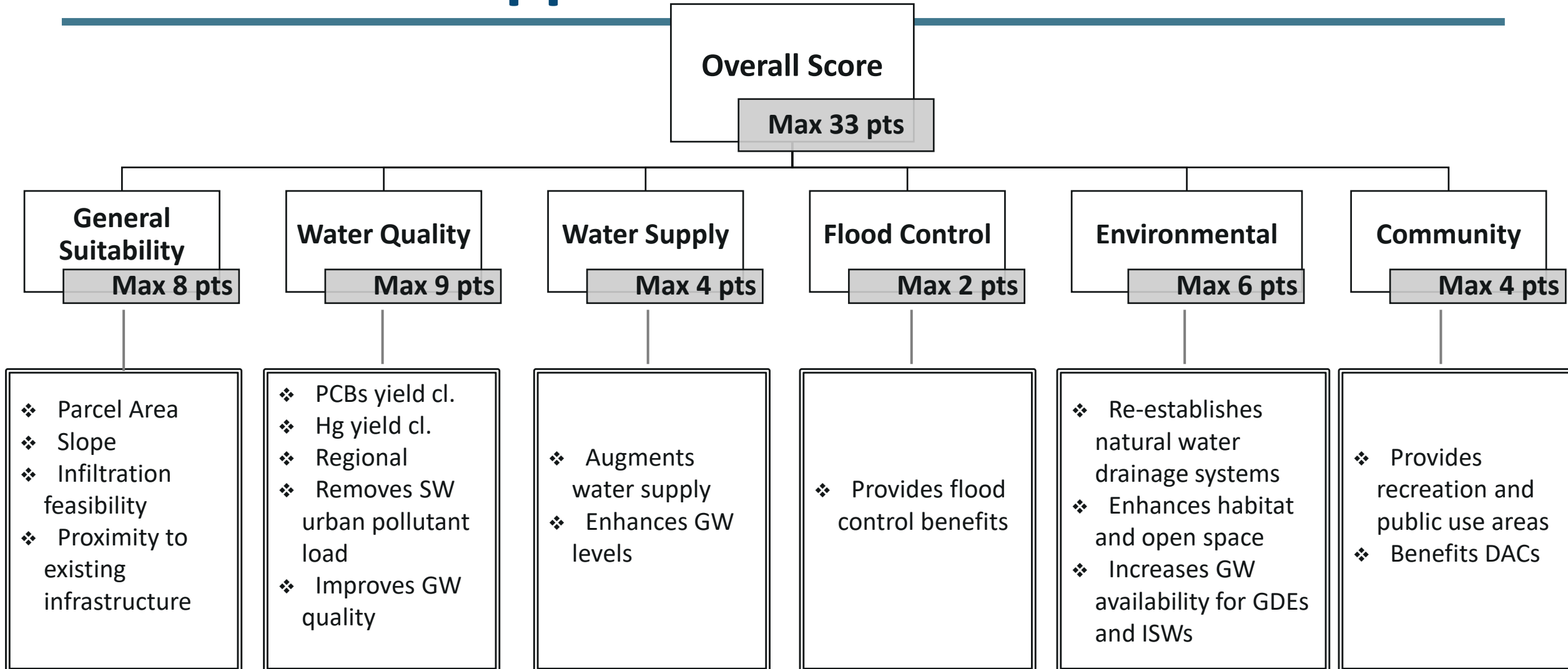
- Sites with 50% of the area overlying landslides hazard zones
- Sites with more than 50% area within USFW Threatened/Critical Habitat
- Sites overlaying contaminated soil and/or contaminated groundwater (CA DTSC Geotracker criteria)



Parcels and Roads remaining after screening are scored along multiple benefit criteria.

Benefit Scoring

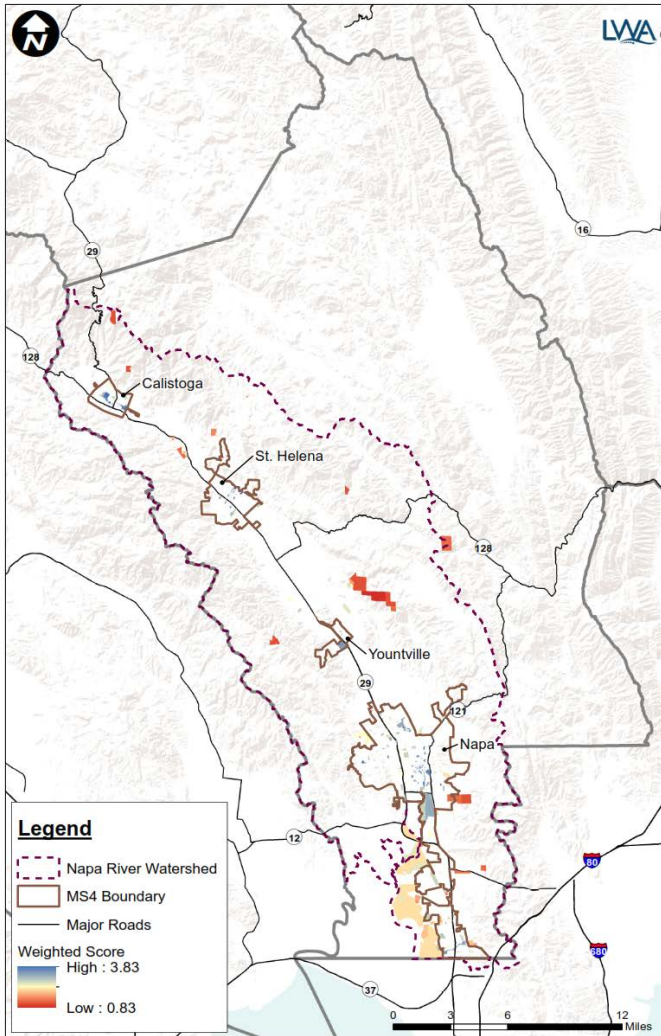
Benefits and Applicable Points



Benefit Scores - Weight

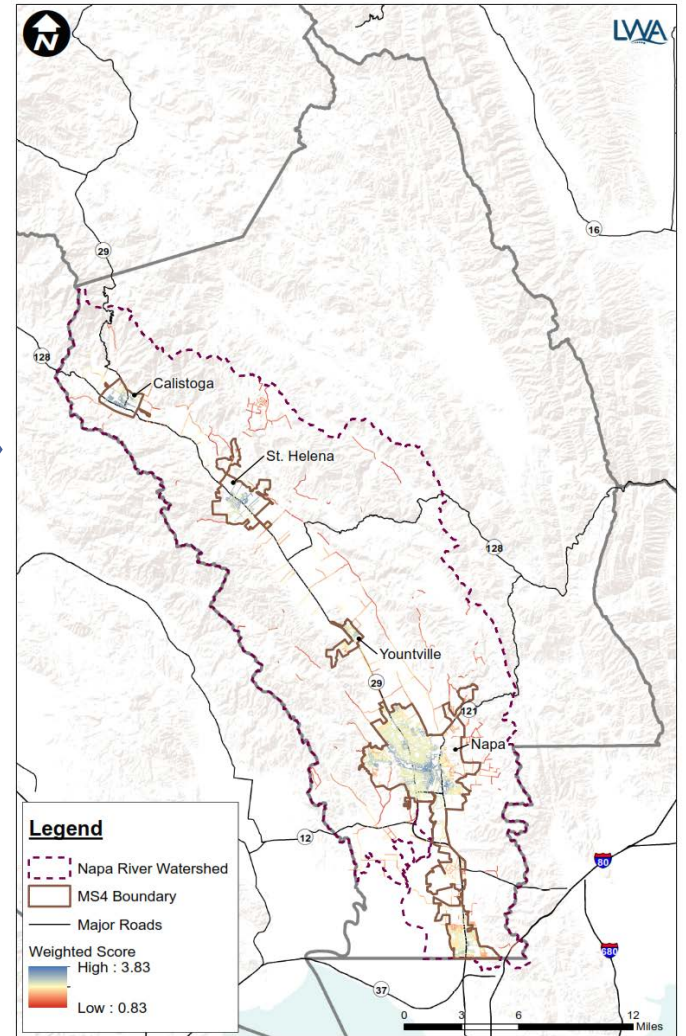
Benefit Category	Number of Criteria	Equal Weight for Each Criteria	Equal Weight for each Category	Example - Custom
All	4	24%	17%	20%
Water Quality	5	29%	17%	20%
Water Supply	2	12%	17%	20%
Flood Control	1	6%	17%	10%
Environmental	3	18%	17%	20%
Community	2	12%	17%	10%

Potential Project Opportunities Summary



500+ parcels

6000+ road segments



Potential Project Opportunities: Output

- Database + maps
- Scores for all multiple benefits

db_index	Rank	Rank Reasoning	Weighted Score	Parcel	Owner	Public/Private	Street Name	General Suitability					Water Quality					Water Supply			Flood Control	Environmental				Community			Total Score	
								Size	Slope	Infiltration	Proximity to Existing Infrastructure	Total Benefit (Gen. Suitability)	PCBs Yield Class	Mercury Yield Class	Regional Facility	Removes Pollutant Loads	Groundwater Quality	Total Benefit (Water Quality)	Augments Water Supply	Groundwater Critical Area	Total Benefit (Water Supply)	Total Benefit (Flood Control)	Natural Water Drainage Systems	Habitat and Open Space Enhancements	GDE and ISW Enhancements	Total Benefit (Environmental)	Recreation	Disadvantaged Community		Total Benefit (Community)
PARCEL_2333	1	Sorted by Weighted Score	3.8	011-173-001-000	CALISTOGA JOINT UNIFIED SCHOOL DISTRICT	Public	N/A	2	2	2	2	8	1	1	1	2	1	6	1	1	2	2	1	1	2	4	1	0	1	23
PARCEL_3961	2	Sorted by Weighted Score	3.8	011-260-003-000	CALISTOGA CITY OF	Public	N/A	2	2	0	2	6	0	2	1	2	1	6	1	1	2	2	1	1	2	4	1	2	3	23
PARCEL_14581	3	Sorted by Weighted Score	3.8	003-172-009-000	NAPA CITY OF	Public	N/A	1	2	2	2	7	1	1	0	2	1	5	1	1	2	2	1	1	2	4	1	2	3	23
PARCEL_15731	4	Sorted by Weighted Score	3.8	009-180-012-000	ST HELENA CITY OF	Public	N/A	2	2	2	2	8	0	2	1	2	1	6	1	1	2	2	1	1	2	4	1	0	1	23

Outreach

Public Outreach Process

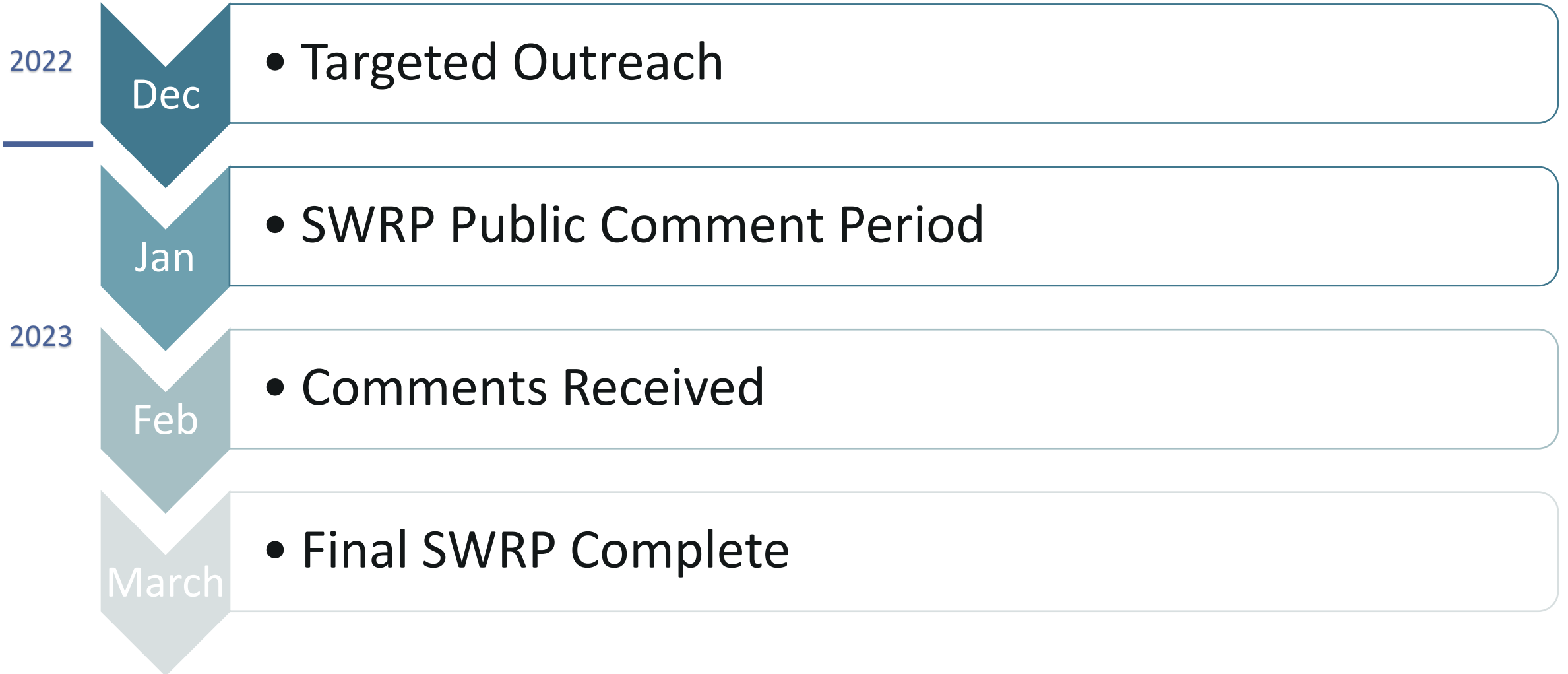
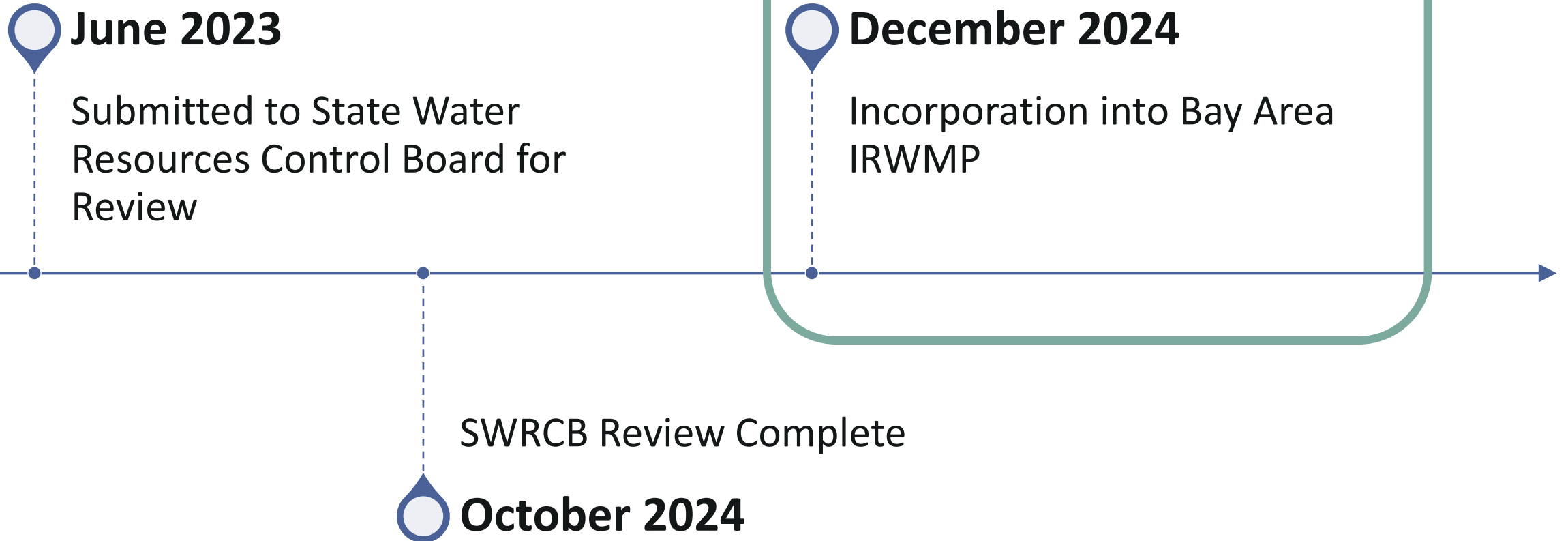


Table 1. Matrix of Stakeholder Audience and Outreach Methods

Stakeholder Audience	Outreach Method
SWRP Participating Agencies	<ul style="list-style-type: none"> • Meetings • Mailing List
Non-Municipal Public Landowners	<ul style="list-style-type: none"> • Email List/Targeted Messages • General Flyer • SWRP Webpage
Watershed Groups and NGOs	<ul style="list-style-type: none"> • Email List/Targeted Messages • General Flyer • SWRP Webpage • Targeted Social Media Messages
Bay Area IRWMP	<ul style="list-style-type: none"> • Targeted Email Messages • Presentation at Bay Area IRWMP Meeting or Discussion with Subgroup Contract
General Public	<ul style="list-style-type: none"> • SWRP Webpage • Targeted Social Media Messages

Final Steps



Questions

Jeff Skinner

Stormwater Program Manager

Napa Countywide Stormwater Pollution Prevention Program

jeff.skinner@countyofnapa.org