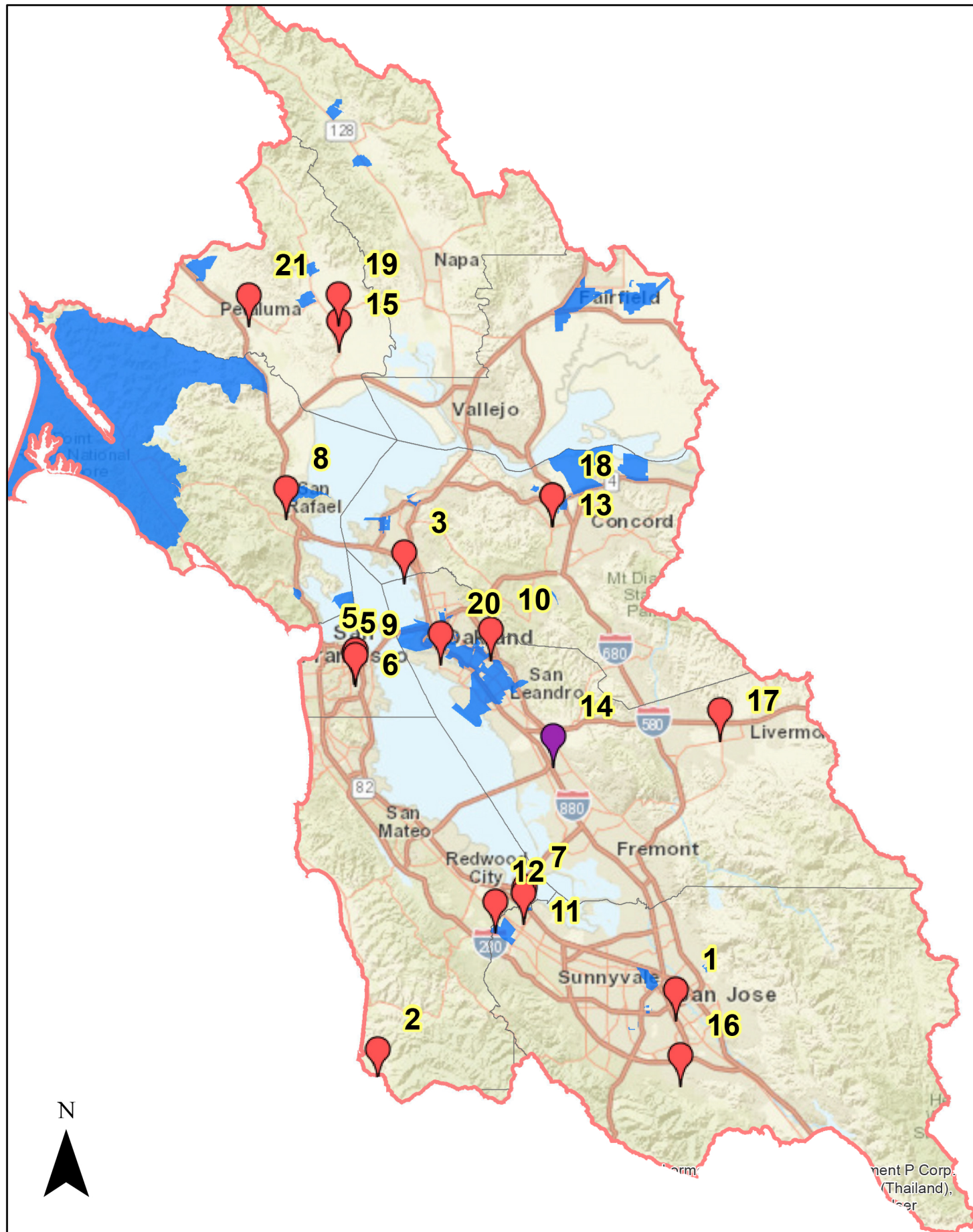


EDAs - Potential Outreach Partners

Legend

 Economically Distressed Areas

1. Keep Coyote Creek Beautiful
2. Rural Service Center of Pescadero (San Mateo County)
3. The Watershed Project (3 Outreach-focused projects; 7 projects submitted total)
4. Sonoma Resources Conservation District and Sonoma Land Trust*
5. Bay Conservation and Development commission
6. Greenaction for Health and Environmental Justice (submitted 4 projects)
7. Nuestra Casa de East Palo Alto
8. Marin County
9. San Francisco Public Utilities Commission
10. Friends of Sausal Creek
11. Youth United for Community Action (YUCA)
12. San Francisquito Creek Joint Powers Authority
13. Contra Costa County Flood Control District ("Urgent" Project)
14. City of Hayward
15. Sonoma Resources Conservation District and Sonoma Land Trust Project Site (Lower Sonoma Creek)
16. BAFPAA: Santa Clara Valley Water District
17. BAFPAA: Alameda County Flood Control
18. BAFPAA: Contra Costa Flood Control & Water Conservation District
19. BAFPAA: Sonoma County Water Agency Project Site
20. San Francisco Estuary Partnership
21. Sonoma Ecology Center & Daily Acts



0 15 30 60 Miles